

State of Wyoming Corner Record

(In compliance with the CORNER PERPETUATION AND FILING ACT, Wyoming Statutes, 2013 Section 33-29-901 through 33-29-910, and the Rules and Regulations of the Board of Professional Engineers and Professional Land Surveyors)

Reverse side of this form may be used if more space is needed.

Record of original survey and citation of source of historical information (if corner is lost or obliterated). Description of corner monumentation evidence found and/or monument and accessories established to perpetuate the location of this corner. Sketch of relative location of monument, accessories, and reference points with course and distance to adjacent corner(s) (if determined in this survey). Method and rationale for reestablishment of lost or obliterated corner.

METHOD FOR REESTABLISHMENT OF LOST CORNER:

Proportioned Corner; no physical evidence or testimony available to establish position.

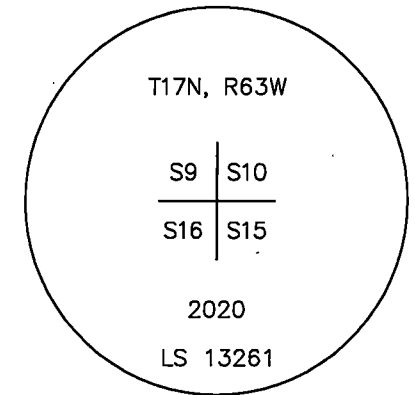
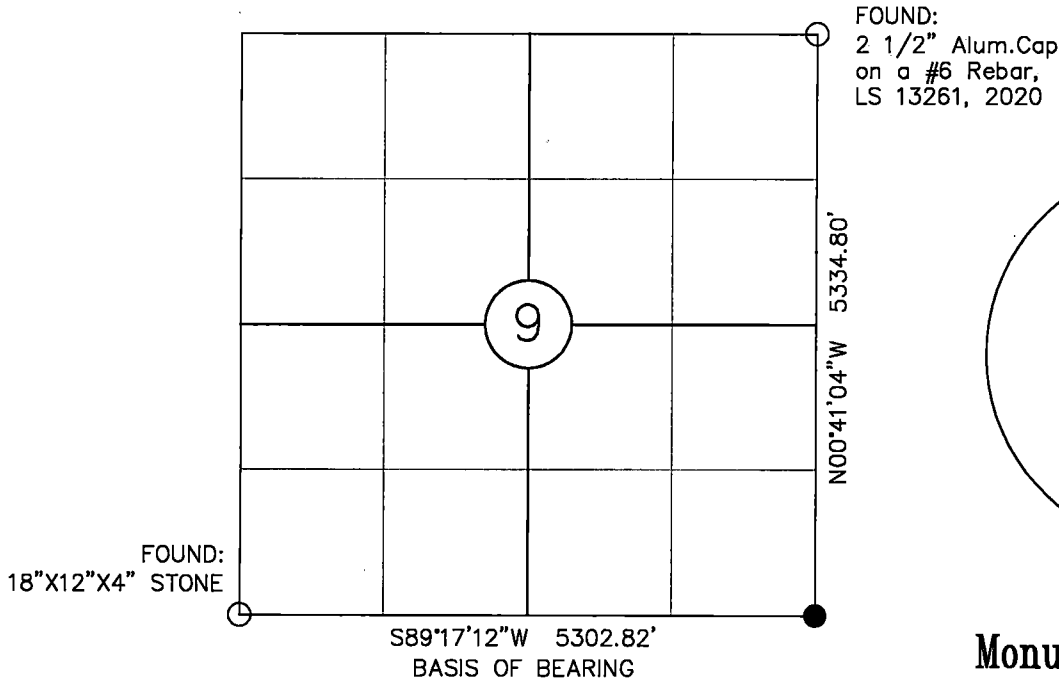
ORIGINAL GLO RECORD: Sandstone 16"x10"x5" marked 4 notches on S side and 3 notches on E side

MONUMENT FOUND: No monument or evidence found

MONUMENT SET: 2 1/2" Aluminum Cap on a #6 Rebar, three (3) inches above ground, stacked stones around monument.

All dimensions are in US Survey Feet

Monument location



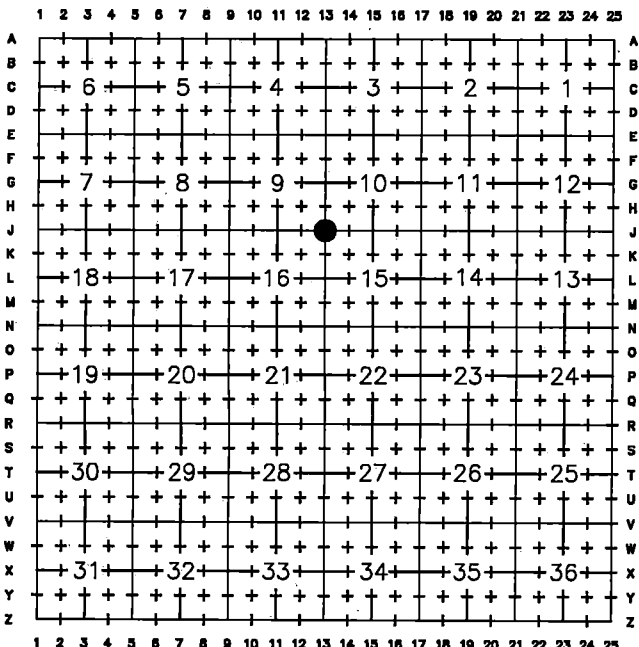
Monument Inscription

See Reverse Side for References

Date of Field Work: 11/2/2020

Office Reference: 1903-009

Cross Index Plat

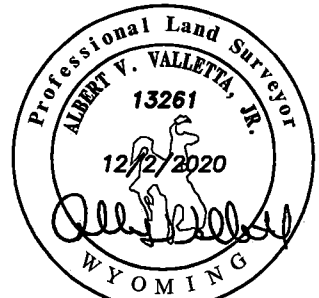


Firm/Agency, Address

DALEY LAND SURVEYING, INC.
17011 LINCOLN AVE., #361
PARKER, CO 80134
(303) 953-9841

This corner record was prepared by me or under my direction and supervision.

SEAL & SIGNATURE



FOR AND ON BEHALF OF
DALEY LAND SURVEYING INC.,
ALBERT V. VALLETTA, JR., PLS 13261



RECP #: 801039
RECORDED 2/1/2021 AT 1:02 PM BK# 2717 PG# 2322
Debra K. Lee, CLERK OF LARAMIE COUNTY, WY PAGE 1 OF 1

Corner Name Southeast Corner Section 9, T 17 N, R 63 W, 6th P.M.

Cross-Index No.: J-13

County: LARAMIE